

INTRODUCTION

The U.S. Geological Survey (USGS) has been conducting research to characterize the extent of natural gas hydrates in deep water and permafrost areas to evaluate 1) methane hydrates as potential future energy source, 2) seafloor stability of submarine slopes, and 3) potential climatic impact of atmospheric methane releases.

Below is an excerpt from a recent news release as an example of the current research being conducted by the USGS Gas Hydrate Project that is published by permission of the USGS. For more information on the USGS Gas Hydrates Project, visit their website: <https://woodshole.er.usgs.gov/project-pages/hydrates/>, and the EMD Gas Hydrate Commodity Committee, chaired by Timothy Collett (USGS).

Wayne Camp
EMD President (2018-2019)

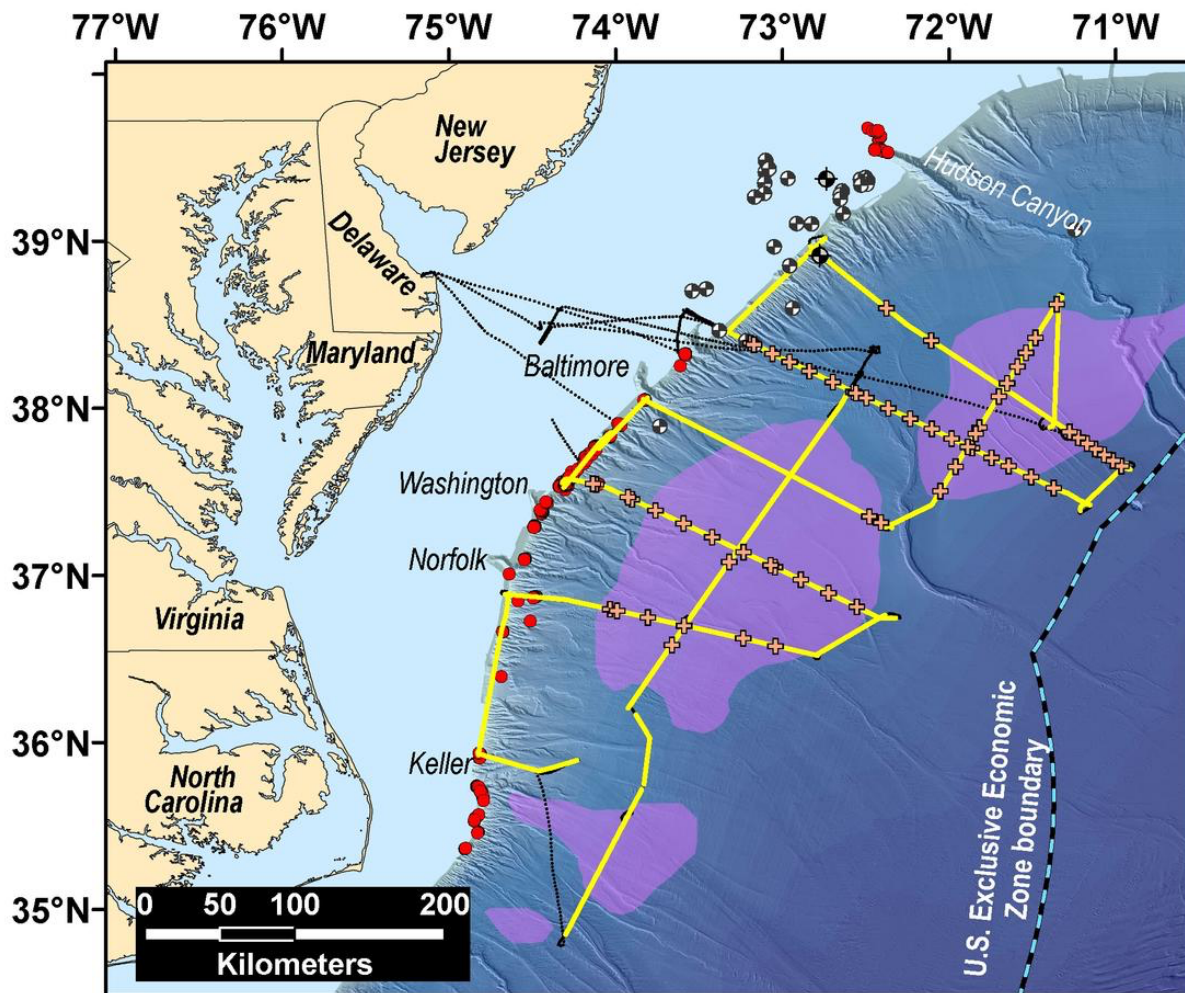
Release Date: SEPTEMBER 20, 2018

Data acquired by the U.S. Geological Survey on the U.S. Atlantic Margin in August 2018 reveal new information about the distribution of gas hydrates in the sector stretching from the upper continental slope to deep water areas offshore New Jersey to North Carolina.

Data acquired by the U.S. Geological Survey on the U.S. Atlantic Margin in August 2018 reveal new information about the distribution of gas hydrates in the sector stretching from the upper continental slope to deep water areas offshore New Jersey to North Carolina. The [Mid-Atlantic Resource Imaging Experiment \(MATRIX\)](#), which was jointly sponsored by the USGS Coastal/Marine Hazards and Resources Program (CMHRP), the [Methane Hydrates R&D Program at the Department of Energy](#), and the Bureau of Ocean Energy Management, acquired more than 2,000 kilometers (about 1,240 statute miles) of marine seismic data that image gas hydrate features and other geologic structures below the seafloor.

The Mid-Atlantic Resource Imaging Experiment (MATRIX) collected reflection seismic data along more than 2000 km of trackline shown in yellow. Black tracklines show transit lines where no seismic data were acquired, and orange crosses denote sonobuoy deployments. Purple areas were identified by BOEM based on legacy seismic data and show possible gas hydrate accumulations. Red symbols mark [seafloor methane seeps](#), and the black and white circles represent exploratory wells drilled in the 1970s and 1980s. Names at the edge of the shelf refer to the major shelf-break submarine canyons. [Bathymetric base map](#) from B. Andrews.

[Gas hydrate](#) forms naturally in seafloor sediments when methane and water combine at moderate pressures and relatively low temperatures. Gas hydrate deposits resemble ice, and they concentrate enormous amounts of methane in the global oceans and in permafrost areas. On the U.S. Atlantic Margin, BOEM had previously identified potential deep water [gas hydrate accumulations](#) that guided planning for MATRIX. In fact, the sediments of deep marine continental margins host [nearly 99 percent](#) of the world's gas hydrate.



The MATRIX data capture images 1 to 3 km (about 3,300 to 9,800 ft) below the seafloor and provide new information about the distribution of a key seismic indicator linked to the presence of gas hydrate. The data also reveal shallow gas deposits and structural features beneath some of the hundreds of [seafloor methane seeps](#) discovered along the Atlantic Margin since 2011. Images include submarine landslide deposits, shallow faults, and sedimentary markers considered important in interpreting the history of the Atlantic Ocean basin to inform assessment of geologic hazards along the eastern seaboard.

During MATRIX, USGS scientists and operational staff from CMHRP were joined by BOEM scientists, protected species visual observers, and outside technicians aboard the research vessel (*R/V*) [Hugh R. Sharp](#), which is owned and operated by the University of Delaware as part of the [University-National Oceanographic Laboratory System](#).

Up to four [airguns](#) were used to generate the acoustic energy for imaging seafloor sediments. The seismic signals were recorded by 112 to 160 receivers towed behind the ship and arrayed within a [streamer](#) up to 1.2 kilometers (0.75 miles) long. The USGS also deployed 60 sonobuoys, which are expendable instruments that receive seismic signals and transmit the information back to the ship at distances up to 15 km (9.3 miles).

Renee Orr, Chief of BOEM's Office of Strategic Resources commented, "MATRIX presented an opportunity to acquire modern seismic data to refine understanding of gas hydrates on the U.S. Atlantic margin in areas that both BOEM and the USGS have previously identified as worthy of study."

Lou Capitano, program manager for DOE's Methane Hydrates program, added that, "MATRIX also represented an important step in addressing interagency priorities to identify deep water gas hydrate deposits on U.S. marine margins."

MATRIX Chief Scientists [Carolyn Ruppel](#) and [Nathan Miller](#), both marine geophysicists with the USGS, credited excellent weather and a favorable Gulf Stream current as key factors in the success of the seismic cruise. Researchers acquired six seismic lines running down the continental slope from the shelf-break to waters as deep as 4,000 meters (about 13,100 ft) offshore New Jersey, Delaware, Maryland, Virginia, and North Carolina. MATRIX also completed three upper continental slope lines and three deep water (more than 2,700 meters water depth) lines oriented parallel to the coastline in this sector.

John Haines, Program Coordinator for USGS CMHRP, noted that the MATRIX effort "engaged scientific, technical, and operations staff across our USGS program and marked the first time since the 1990s that CMHRP has independently conducted a regional-scale seismic project with airgun sources. The multiagency collaboration that contributed to the success of MATRIX is an excellent model for marine seismic programs that support mission-related research objectives."

In addition to the scientific partnership among the [USGS Gas Hydrates Project](#), DOE, and BOEM, MATRIX benefited from logistical support provided by Scripps Institute of Oceanography, Lamont-Doherty Earth Observatory, and the National Science Foundation. The National Marine Fisheries Service of the National Oceanic and Atmospheric Administration supported environmental compliance and permitting under the Marine Mammal Protection Act and the Endangered Species Act.

The [USGS Gas Hydrates Project](#) focuses on the energy resource potential of gas hydrates, the interaction between hydrates and the environment, and connections between gas hydrates and geohazards like submarine landslides. MATRIX produced data that will, for years to come, facilitate studies in all of these areas and support broader analyses of the margin's hazards, stratigraphy, and deep structure by the USGS, other agencies, and the academic community.

Read DOE-National Energy Technology Laboratory's announcement [here](#).