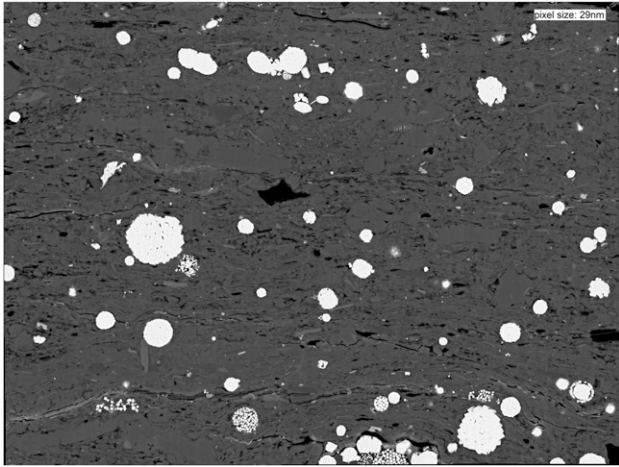


*Factors controlling shale microstructure and porosity: A case study on upper Visean Rudov beds from the Ukrainian Dneiper–Donets Basin*

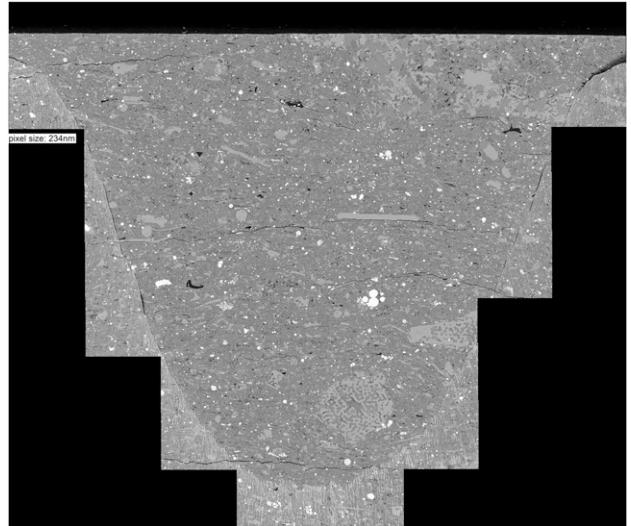
**D. Misch, J. Klaver, D. Gross, V. Mayer-Kiener, F. Mendez-Martin, J. Schmatz, and R. F. Sachsenhofer**

AAPG Bulletin, v. 102, no. 12 (December 2018), pp. 2629–2654

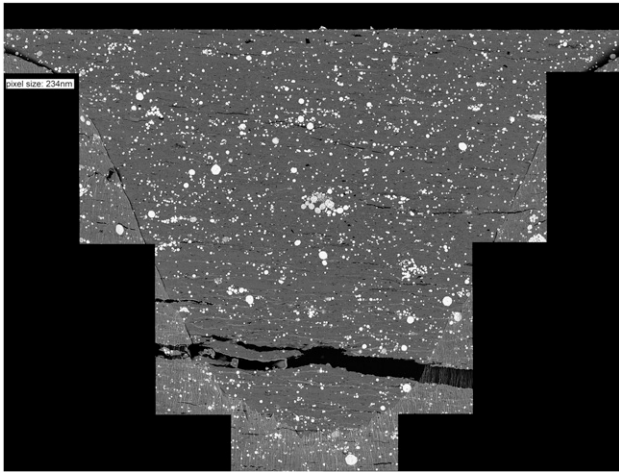
Copyright ©2018. The American Association of Petroleum Geologists. All rights reserved.



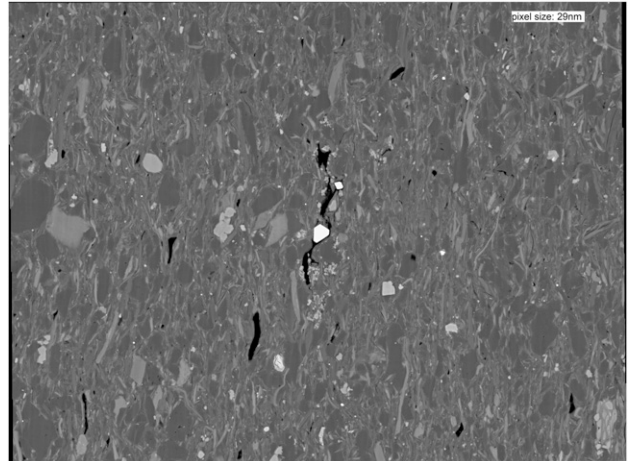
**Map 1.** Kampanska 146 backscattered electron 10,000 $\times$ .



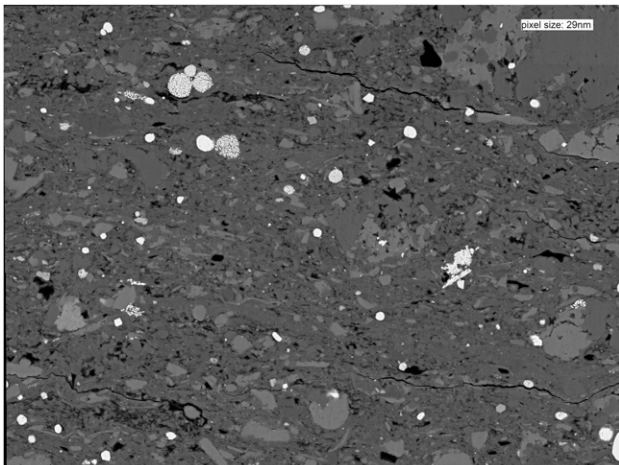
**Map 4.** Kampanska 159 backscattered electron 1250 $\times$ .



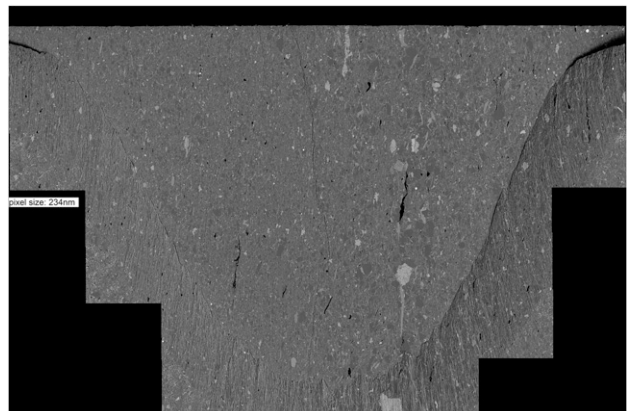
**Map 2.** Kampanska 146 backscattered electron 1250 $\times$ .



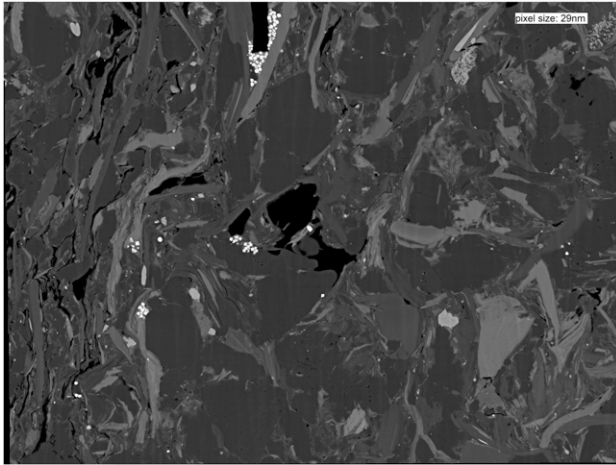
**Map 5.** Kysivska 43 backscattered electron 10,000 $\times$ .



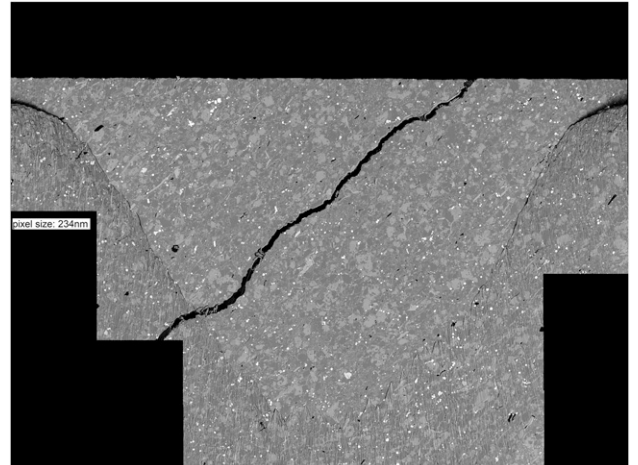
**Map 3.** Kampanska 159 backscattered electron 10,000 $\times$ .



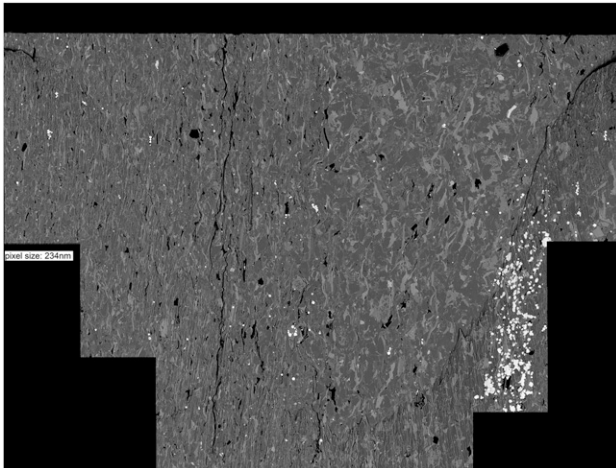
**Map 6.** Kysivska 43 backscattered electron 1250 $\times$ .



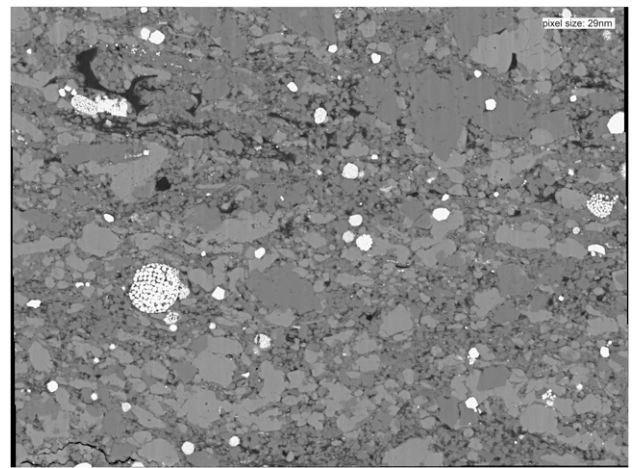
**Map 7.** Komyshevatska 20 backscattered electron 10,000 $\times$ .



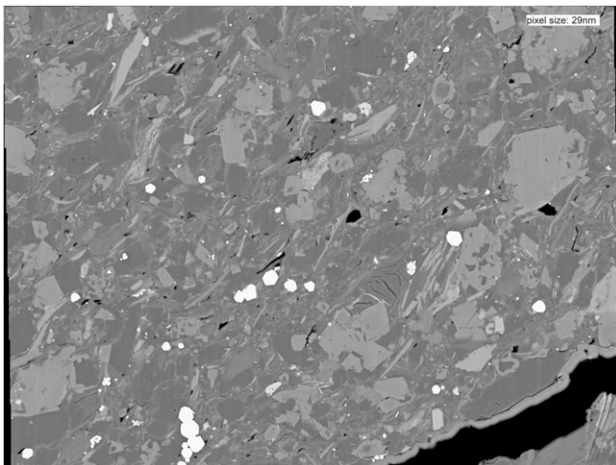
**Map 10.** Komyshevatska 21 backscattered electron 1250 $\times$ .



**Map 8.** Komyshevatska 20 backscattered electron 1250 $\times$ .

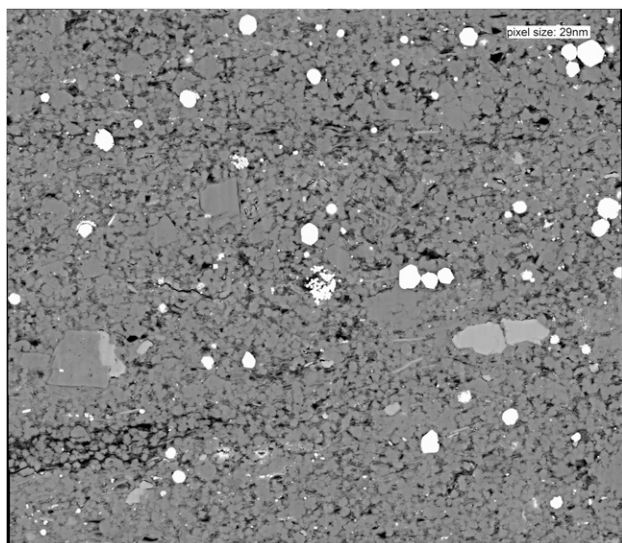
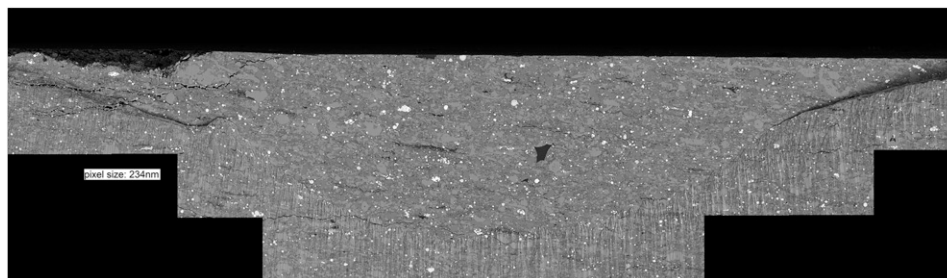


**Map 11.** Northern Pogarshchinska 63 backscattered electron 10,000 $\times$ .

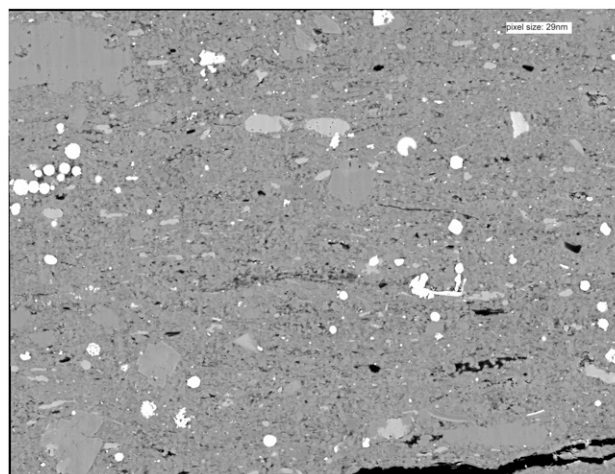


**Map 9.** Komyshevatska 21 backscattered electron 10,000 $\times$ .

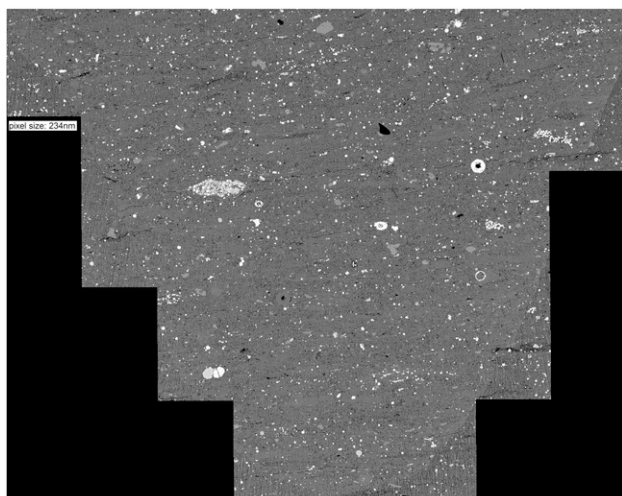
**Map 12.** Northern Pogarshchinska  
63 backscattered electron 1250 $\times$ .



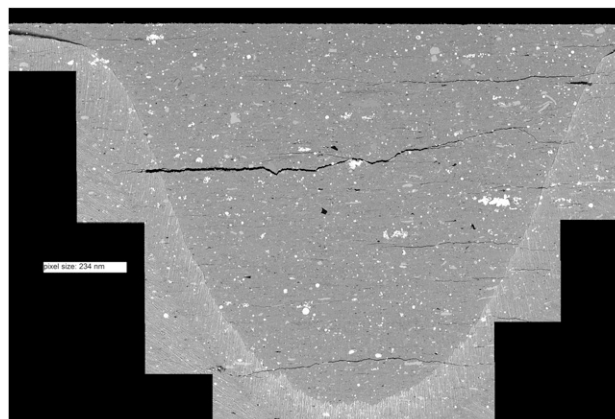
**Map 13.** Northern Pogarshchinska 72 backscattered electron  
10,000 $\times$ .



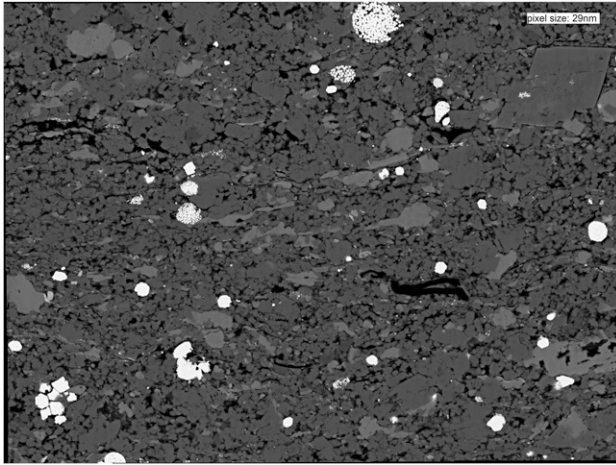
**Map 15.** Northern Pogarshchinska 74 backscattered electron  
10,000 $\times$ .



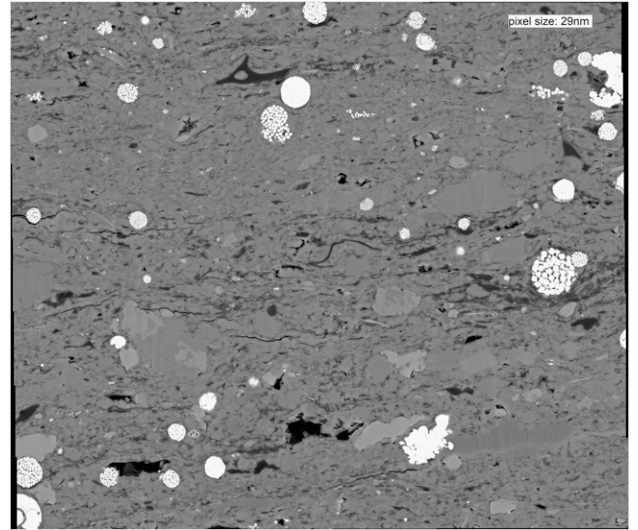
**Map 14.** Northern Pogarshchinska 72 backscattered electron  
1250 $\times$ .



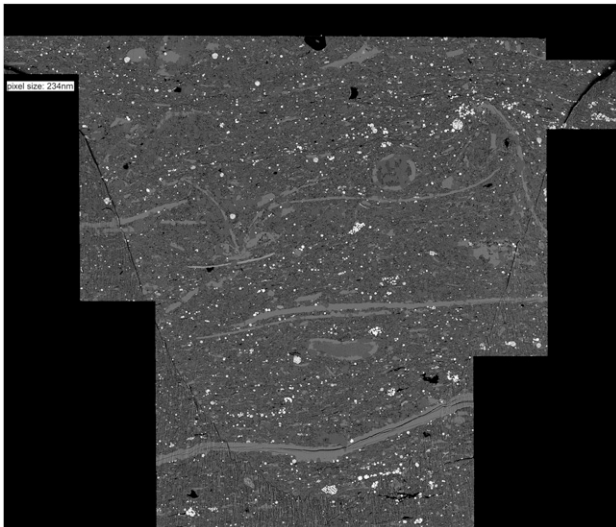
**Map 16.** Northern Pogarshchinska 74 backscattered electron  
1250 $\times$ .



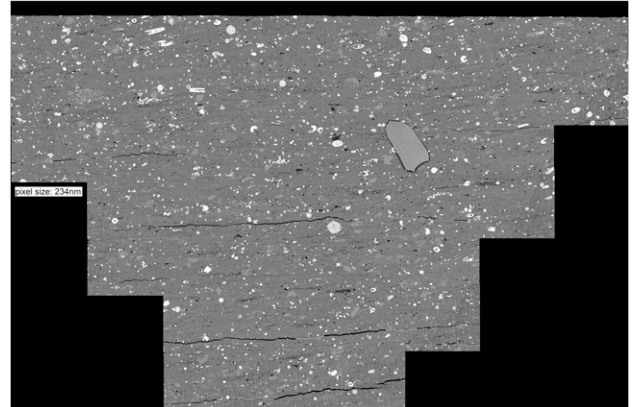
**Map 17.** Northern Pogarshchinska 83 backscattered electron 10,000 $\times$ .



**Map 19.** Ostapovska 50 backscattered electron 10,000 $\times$ .

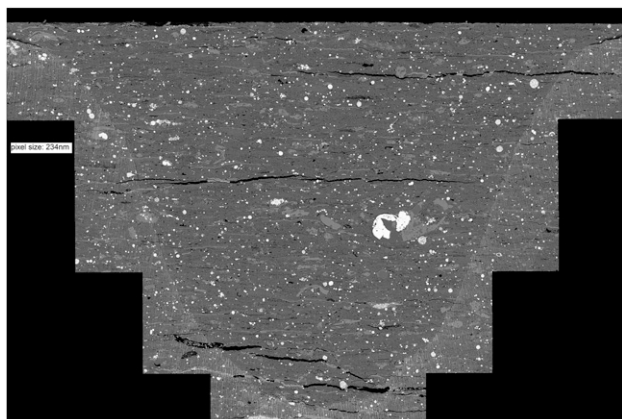
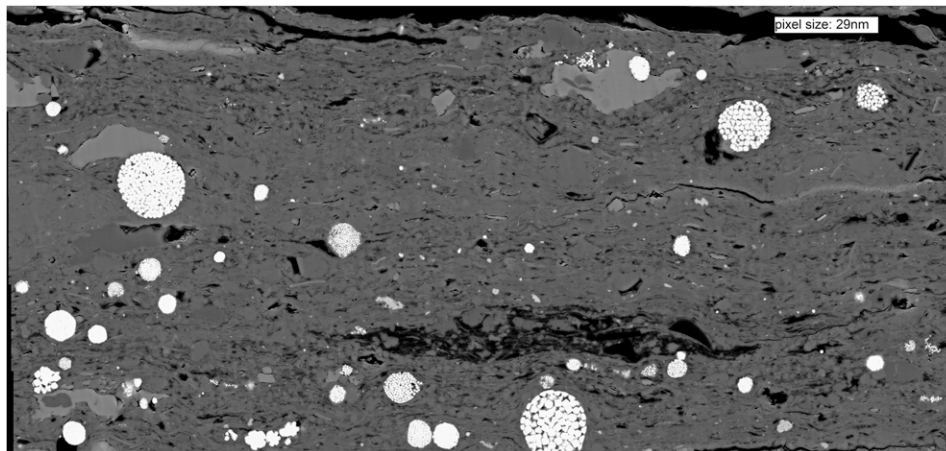


**Map 18.** Northern Pogarshchinska 83 backscattered electron 1250 $\times$ .

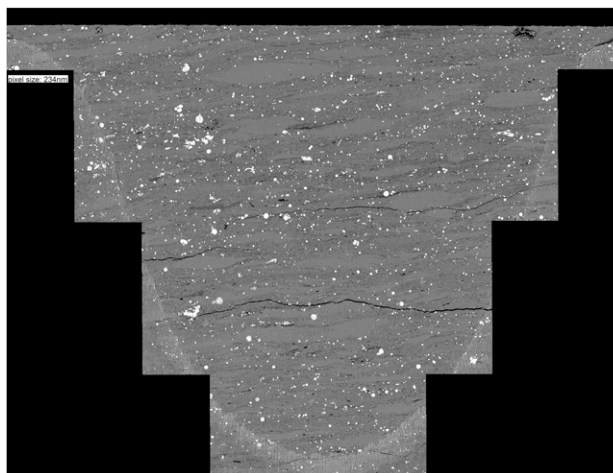


**Map 20.** Ostapovska 50 backscattered electron 1250 $\times$ .

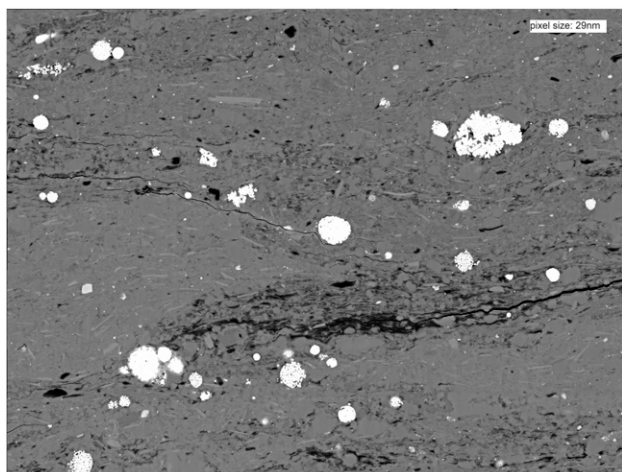
**Map 21.** Ostapovska 53  
backscattered electron 10,000 $\times$ .



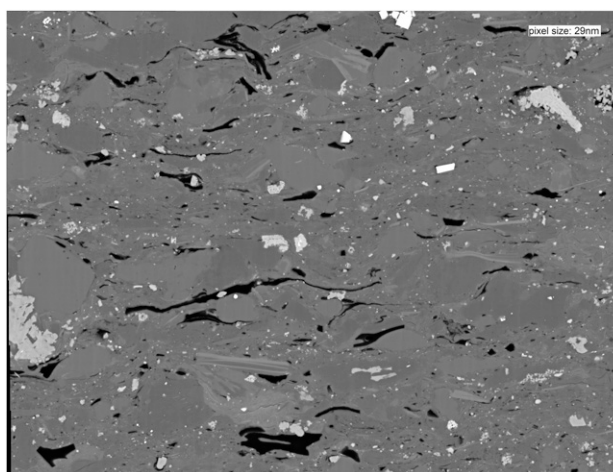
**Map 22.** Ostapovska 53 backscattered electron 1250 $\times$ .



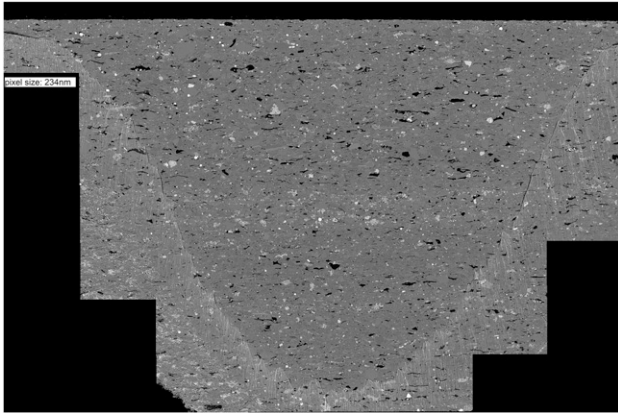
**Map 24.** Sviridovska 117 backscattered electron 1250 $\times$ .



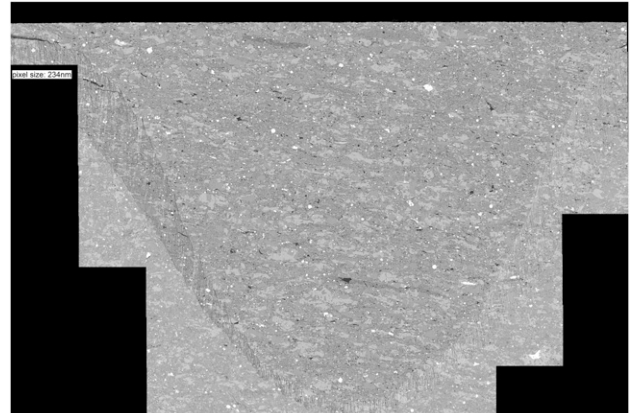
**Map 23.** Sviridovska 117 backscattered electron 10,000 $\times$ .



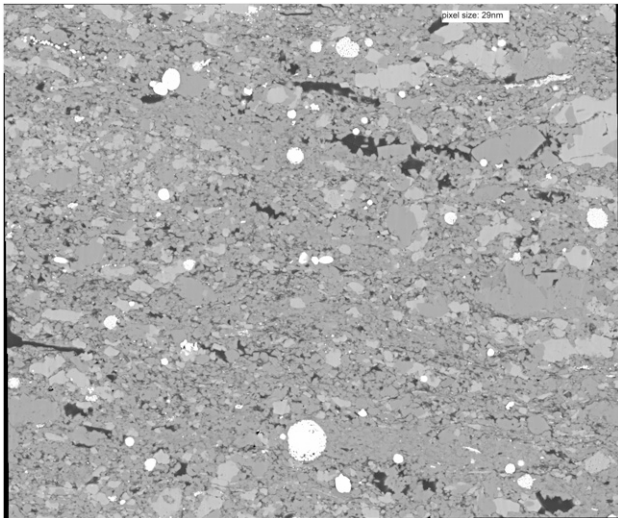
**Map 25.** Yantarna 176 backscattered electron 10,000 $\times$ .



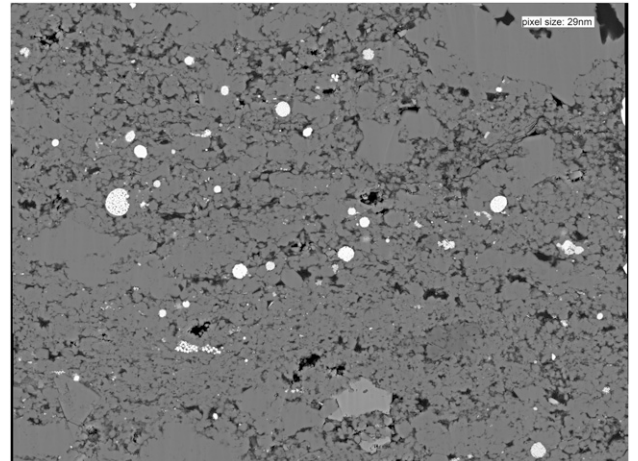
**Map 26.** Yantarna 176 backscattered electron 1250×.



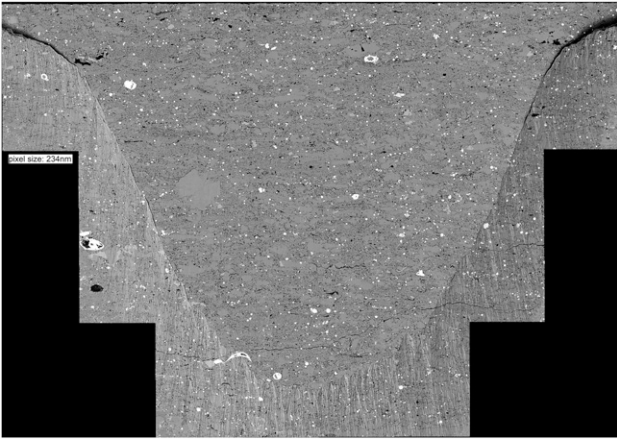
**Map 28.** Yantarna 194 backscattered electron 1250×.



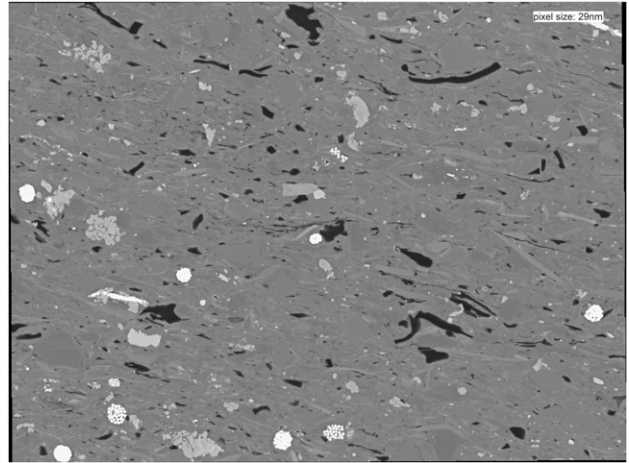
**Map 27.** Yantarna 194 backscattered electron 10,000×.



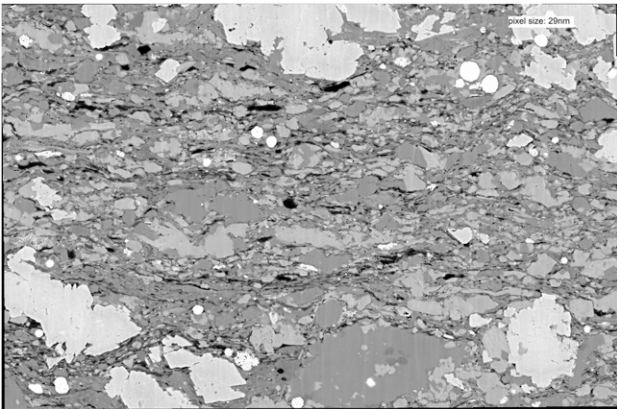
**Map 29.** Yantarna 198 backscattered electron 10,000×.



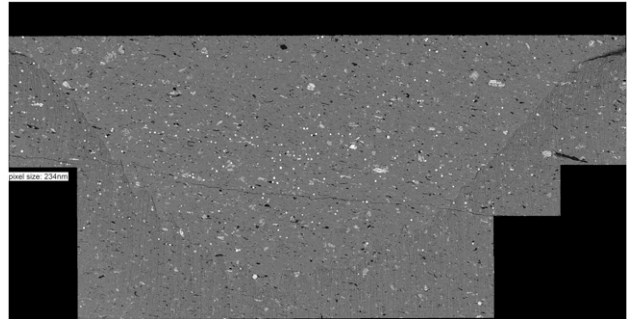
**Map 30.** Yantarna 198 backscattered electron 1250 $\times$ .



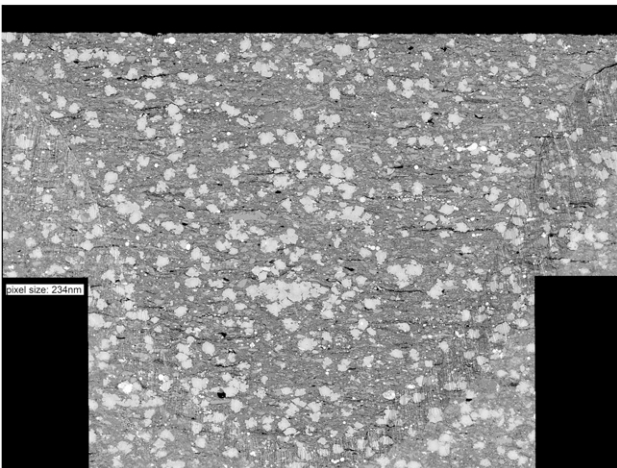
**Map 33.** Zimnitska 91 backscattered electron 10,000 $\times$ .



**Map 31.** Zimnitska 107 backscattered electron 10,000 $\times$ .



**Map 34.** Zimnitska 91 backscattered electron 1250 $\times$ .



**Map 32.** Zimnitska 107 backscattered electron 1250 $\times$ .