

Datashare 33: Undivided high-resolution Figure 6
Petroleum reservoirs within a spiculite-dominated depositional sequence:
Cowley Formation (Mississippian: Lower Carboniferous), south-central Kansas
S. J. Mazzullo, Brian W. Wilhite, and I. Wayne Woolsey

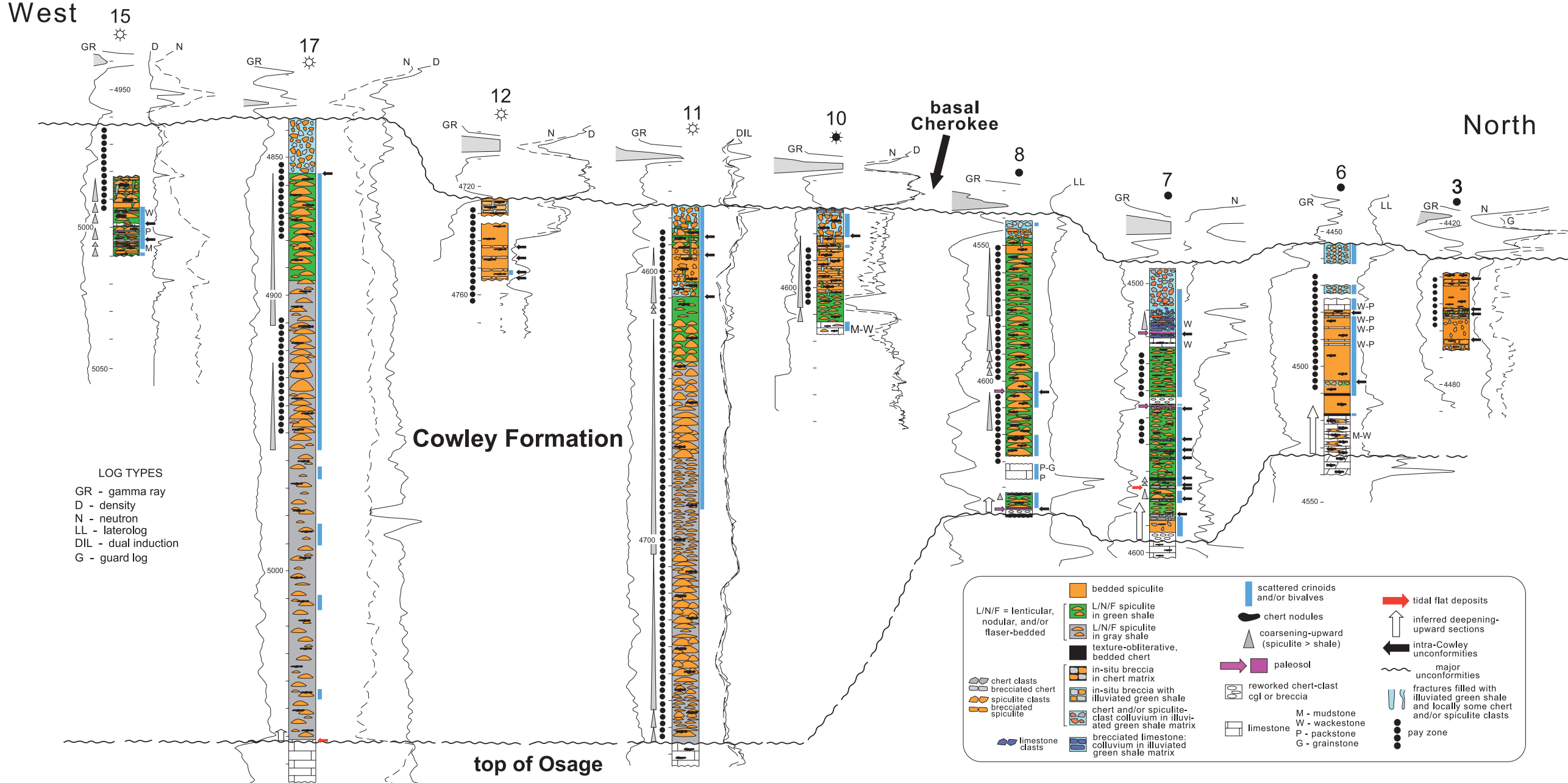


Figure 6. Cross section showing lithologies in the Cowley section. For the location of this section, see Figure 3. Relative abundance of chert and abundance and/or increasing thickness of spiculite lenses in the cores are shown schematically. Hung on an approximate paleodip datum. Refer to the text for the explanation of possible correlations. Wells: (3) Graves #12 Thomas Forsyth, 29-T32S-R12W; (6) Continental #3 Newkirk, 20-T33S-R11W; (7) Continental #10 Harbaugh, 29-T33S-R11W; (8) Continental #15 Harbaugh, 32-T33S-R11W; (10) Nichols #1-8 Michel, 8-T34S-R11W; (11) Woolsey B #1 Wiley, 8-T34S-R11W; (12) Nichols #1-26 Stranathan, 26-T34S-R12W; (17) Woolsey A #5 Oakes, 5-T35S-R13W; and (15) Midwest #8 Ballet Ranch, 31-T34S-R15W.