

**AAPG International Regions Committee**  
**3:00 PM November 4, 2006**  
**AAPG International Conference & Exhibition, Perth, Australia**

**Welcome & Introductions – J. Kaldi / J. Brooks**

---

Kunle Adesida, Past President, Africa Region  
(representing Africa Region President, Deborah Ajakaiye)

Nilo Azambuja, Latin American Region President-Elect  
(representing Latin American Region President, Carlos Abreu)

Lee Billingsley, AAPG President

Dave Blanchard, AAPG Global Development  
Committee Coordinator

John Brooks, IRC General Co-Chair, European Region  
President

Chuck Caughey, IRC Vice-Chair for Education and  
Training

Herman Darman, Asia-Pacific Region President

John Dolson, AAPG Vice President

Rick Fritz, AAPG Executive Director

Dana Patterson Free, AAPG International Conference  
Manager

Robbie Gries, Past IRC Chair

Will Green, AAPG President-Elect

Chris Heine, Middle East Region  
(representing Middle East Region President,  
Abdulkader Afifi)

John Hogg, ICE Chair, Past President, Canada Region  
(representing Canada Region President, Warren  
Workman)

Neil Hurley, Schlumberger, Candidate for AAPG  
President-elect

Peter Kahn, IRC Vice-Chair of Communication  
Strategies

John Kaldi, IRC General Co-Chair

Joe Lambiase, Asia-Pacific Region Vice President

David Lange, AAPG CFO

Peter Lloyd, IRC Member

Randi Martinsen, AAPG Treasurer

Carol Cain McGowen, AAPG Sections & Regions  
Manager

Debra Nishida, IRC Member

Peggy Pryor, AAPG Meetings Manager

---

Following welcome and introductions, Dana Patterson Free reviewed safety procedures for the Perth Conference and Exhibition Centre.

**Minutes of Meeting 08 April, 2006**

Minutes were approved as submitted.

**President's Comments – L. Billingsley**

President Billingsley encouraged everyone to think about AAPG's resources past, present, and future to include 1) financial resources, and 2) member/volunteer resources. He contrasted SPE's autocratic system with AAPG's democratic system, where decisions must go through the House of Delegates, and therefore, change is sometimes slow.

- AAPG provides its members an opportunity for international work and contribution.
- Plans for 2006-2007
  - International VP on the AAPG Executive Committee
  - Graduated dues proposal process – currently being reviewed by the Constitution and Bylaws Committee, then reviewed during House of Delegates mid-year meeting on Dec. 2. The final Constitution and Bylaws Committee proposal will be voted on April 1 at the House of Delegates Annual Meeting in Long Beach.

Kaldi asked if the IRC could submit input to the House of Delegates on the graduated dues proposal.

Action: Following the House of Delegates mid-year meeting on December 2, the IRC will be provided with the graduated dues proposal and invited to comment at that time.

- *Corporate Structure* – The AAPG Executive Committee is considering whether to incorporate the Regions. Incorporation would involve the Regions having their own budget, and considerations of an appropriate hierarchy within AAPG and the Regions.

Action: Billingsley asked the IRC to provide input to the Executive Committee on the issue of incorporation.

- *International Offices* – Region offices should be designed to facilitate Region activities. The staff in Regional offices will be paid by AAPG Headquarters, and therefore will be considered as AAPG employees.

Brooks expressed concern over the lag time in setting up the AAPG European Office.

- *Regional/Sectional Advisory Committees* – The purpose of the proposed Regional (or Sectional) Advisory Committees will be to make recommendations to the Regional Councils and to IRC, propose

short courses, venues, etc. It is anticipated that these Advisory Committees will then take ownership of their recommendations and help facilitate implementation.

Lloyd – Regional Advisory Committees – concerned that this creates another level that diffuses communication.

**Action:** AAPG Executive Committee and staff will develop governing rules for the proposed Regional Advisory Committees to clarify expectations and responsibilities of Advisory Committee members. Once developed, the Regional Advisory Committee governing rules will be sent to IRC members.

Kaldi encouraged IRC members to respond and give feedback to the proposed Regional Advisory Committees concept.

Fritz explained that he met with Bobbie Ryan, Chair of the AAPG Corporate Advisory Board. John Dolson had previously suggested the creation of Region Corporate Advisory Boards, and the “Regional Advisory Committee” concept resulted from those discussions.

- *Virtual Meetings* – The AAPG Executive Committee will consider “virtual meetings” for the future to alleviate travel challenges.

## Executive Director Update – R. Fritz

- *Dues Structure*

- Many models have been considered.
- “Ability to Pay” model is considered the best. It is based on the honor system and asks members to select a range that represents their personal gross income.
- Unlike the World Bank model that tends to categorize people by income levels. Some consider the World Bank model to be demeaning.
- Reduced dues payments are associated with a reduction in AAPG products and services.
- | <u>Annual gross income</u> | <u>Annual dues payment</u> |
|----------------------------|----------------------------|
| > US\$65,000               | \$80 (full dues)           |
| US\$65,000 - \$45,000      | \$60                       |
| US\$45,000 - \$25,000      | \$40                       |
| < US\$25,000               | \$20                       |

**Action:** AAPG Headquarters will provide documentation on “Ability to Pay” (Graduated Dues) model for IRC review.

Darman – In Asia-Pacific Region, people expect to pay like the SEG model.

Gries – This dues model is long overdue and will do a lot for international members.

Fritz – emphasized that this is now a House of Delegates decision.

Kaldi – Reminded IRC members of their option to make a collective recommendation in favour of the graduated dues/ability to pay model or to not endorse the model.

**Action:** If agreed at IRC meeting in Long Beach, Kaldi will make such a recommendation (on behalf of IRC) to HoD in Long Beach

- *AAPG Corporate Group Membership*

- Targets large NOCs because they will pay AAPG membership dues for their employees, but some inquiries from independents have also been received.
- Combines AAPG products + membership into one package
- Custom designed per company
- Individuals must still meet and qualify for all AAPG membership requirements
- This program will help grow Region membership.

Dolson – Ros Nes (Russia’s 2<sup>nd</sup> largest oil company), Petrobras and Petronas are interested in corporate membership.

Lambiase – Concerned that one or two large companies will buy enough memberships to control their Region.

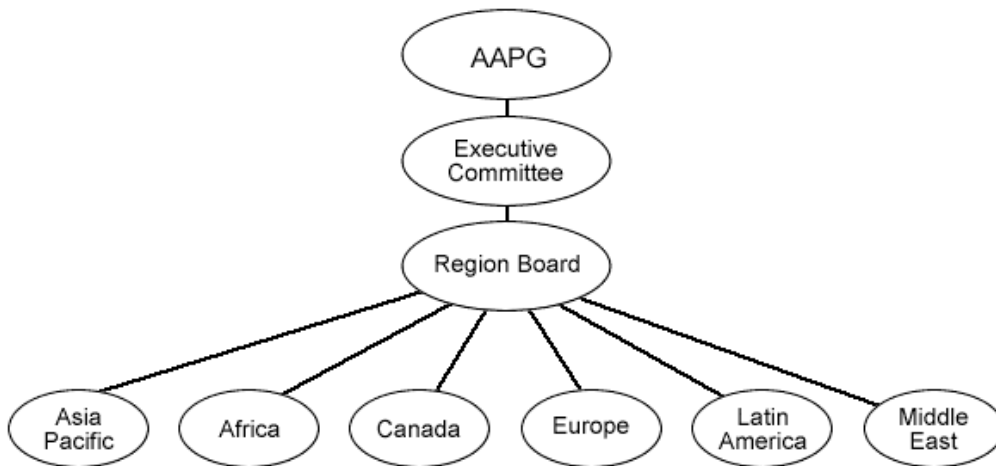
**Action:** AAPG Headquarters will send IRC members the Corporate Group Membership documents including a sample contract.

- *AAPG Corporate Structure*

When is the appropriate time to incorporate? First, the SPE model was considered. There was concern that the House of Delegates would not pass a proposal to incorporate all the Regions. This would result in lost time.

Currently 33% of AAPG members are international (non-US).

- Consider an organization model



- With this model, the Region Board would set the budget for the Regions (for approval by AAPG Executive Committee).
- Region incorporation occurs when a Region office opens.
- Opening of a Region office is justified by the level of business activity.
- Each Region identifies their representative on the Region Board.
- The Sections are already financially independent.

Kaldi – with this model, the IRC may not be needed. The Region Board equals IRC with “teeth and a wallet”.

- The Executive Committee will consider funding projects related to Region accelerated development.
- Funding proposals may also be submitted to the AAPG Foundation.
- Business Plans – Rick thanked each Region for preparing and submitting their business plans. The Region plans will be incorporated into the overall AAPG business plan. This is the first time ever that all areas of AAPG have developed business plans – all Sections, Regions, committees, and departments.

Fritz - asked for the IRC to develop a business plan within the next 30 days.

**Action:** Kaldi asked for volunteers to form an IRC sub-committee for purposes of developing an IRC business plan within the next 30 days. Volunteers: Kaldi, Kahn, Blanchard, Dolson, Darman.

### **IRC Mission Statement – P. Kahn**

The IRC is now a more representative body with responsibilities to represent, review, and recommend. The Regions are constantly evolving, and therefore, the IRC mission statement needs to be broad in scope. The proposed new IRC Mission Statement has been posted on the AAPG website for the last few weeks.

Lloyd – He was Chair of IRC when the original mission statement was first drafted. He likes this second version better!

**Action:** The committee voted unanimously to accept the new IRC Mission Statement as written.

### **Roles of new VP Regions, VP Sections; ex-officio members – J. Dolson**

- Direct tie to the Executive Committee
- Help keep focus on priorities
- Assist the Sections & Regions Manager
- Encourage the Regions to schedule activities every month, thereby adding value to the Region
- Suggest the Regions start by forming Region Advisory Committees

Kaldi – the VP role could also include coordinating with affiliate societies, to “carry the AAPG banner”, and to tap into local societies for Region speakers.

Brooks – suggested a non-competitive approach with other Region societies. For example, the European Region plans to offer speakers on topics not being addressed by other societies. The European Region will participate with other societies for larger conferences and events, while trying not to replicate.

- Dolson encouraged a Region message of “AAPG visible monthly.”
- Recommendations from the Corporate Advisory Committees will drive the Region business plans.
- Develop local monthly value. This in turn will lead to 1) steady presence, 2) increased membership, 3) drive increased volunteers, and 4) potential for incorporated Region office.

## **Role of new Sections & Regions Manager – C. McGowen**

Kaldi introduced and welcomed Carol McGowen.

McGowen explained that she reported directly to the Executive Director. Her position was created to provide a higher level of accountability and communication to members worldwide. She invited direction from IRC members to help establish top priorities for her work.

**Action:** Schedule discussion as an agenda item for the Leadership Conference in February.

## **Discussion on amalgamating ICE into IRC – J. Brooks/J. Hogg**

Hogg – the primary role of ICE is revenue generation for AAPG. The committee is comprised of members experienced in selecting venues and executing large conventions. The IRC does not represent that same skill set.

Brooks – The benefit of the Athens model is a 50-50 split of revenue and staff support between the Region and AAPG Headquarters.

**Action:** Kaldi suggested that a document be prepared with position statements from both Hogg and Brooks.

## **Honors and Awards – H. Darman**

- Proposal to add local regional awards

Gries – Sections have done this, local awards became part of the resume for members. Must ensure that Regions have representation on Advisory Council to speak for their members.

Kaldi – Emphasized Regions must attend Advisory Council meetings.

Gries – We do not need the Executive Committee to ratify Sections' or Regions' awards. There are many deserving members at the Section / Region / Affiliate level. For example, Rocky Mountain Assoc. Pet. Geol. is the only affiliate petroleum geology organization that gives an Explorer of the Year award. IMIS software at AAPG HQ contains records of members' activities, but only if provided by members to HQ. Many accomplishments are not listed. Member databases can be provided on request from HQ.

## **Increasing International Representation: Committees/HoD – P. Lloyd**

Lloyd – Observed only 65% attendance at HoD meetings. Regions will lose credibility if meetings are not attended. HoD rules are very flexible for representatives.

McGowen – Membership numbers impact HoD representation for each Region. Suggest Region leadership encourage payment of delinquent dues.

## **Forging links with Sections; Presence on each others telecons – J. Brooks**

**Action:** Brooks suggested looking at all committees for appropriate international representation – McGowen review and facilitate.

## **International Visiting Geologist / Distinguished Lecture Program - C. Caughey**

Heine – When giving talks internationally, can speakers also be representing AAPG as VG?

## **Region Updates see *Global Development Update handout (J. Dolson)***

### **1. Africa – K. Adeside**

- Reported on plans for Capetown 2008
- Difficulty of student application process
- Considering a Regional office out of NAPE headquarters in Lagos

### **2. Asia Pacific - H. Darman**

- Working on new student chapters
- Region will sponsor 4 students to attend Perth
- VGP – Region will sponsor if corporations do not.
- Considering possible international conference in India for 2012
- Looking at potential sites for Region offices in Singapore and Jakarta
- Involving young members (30+) in committees

### **3. Canada - J. Hogg**

- Warren Workman is recovering

#### **4. Europe - J. Brooks**

- Carol Lucas is helping to increase HoD members
- European Region Newsletter – 2 editions
- APPEX – March 20 – 22, 2007
- Athens – November 17 – 21, 2007
- Athens model working well – includes presentations from Mid-East and Africa Regions
- London office open – managed by Steve Veal in a paid position
- Meeting every Monday with Steve Veal
- Imperial College January 17, 2007 – 1<sup>st</sup> Region membership meeting
- Plan to hold meetings every three months

#### **5. Latin America - N. Azambuja**

- Needs recommendation of best contacts within the Region

**Action:** Send membership lists and names of Presidents of Affiliate organizations for each Region.

Gries – recommended Region Presidents travel to each country within their Regions.

#### **6. Middle East - C. Heine**

- GEO 2006 went very well
- Bahrain under consideration for Region office
- Dhahran Geoscience Society (DGS) now has a website that is linked to the Middle East Region page of AAPG's website
- First Region election for President / Vice President is upcoming
- DGS will fund a representative to attend the AAPG Annual Meeting

#### **Discussion on how to increase membership in Regions - All**

Brooks – Proposed that Region Membership Committee be responsible for reviewing and approving membership applications rather than transferring applications to Tulsa.

Azambuja – Need to define and communicate the benefits of AAPG membership. Regional meetings of 100 – 150 people with HQ support to help with marketing will boost visibility –. Regions can provide help to select keynote speakers for regional meetings.

Heine – Middle East currently has a full house with Distinguished Lecture presentations but needs more. Proposal to Foundation – fund Distinguished Lecturers twice a year. “We live with shackles.” Regions need money to organize activities. Possible solution – Members pay dues to affiliate society, which would filter a percentage of funds to AAPG.

**Next Meeting: Annual Leadership Conference, February 10, Tulsa OK**

**Adjourn**