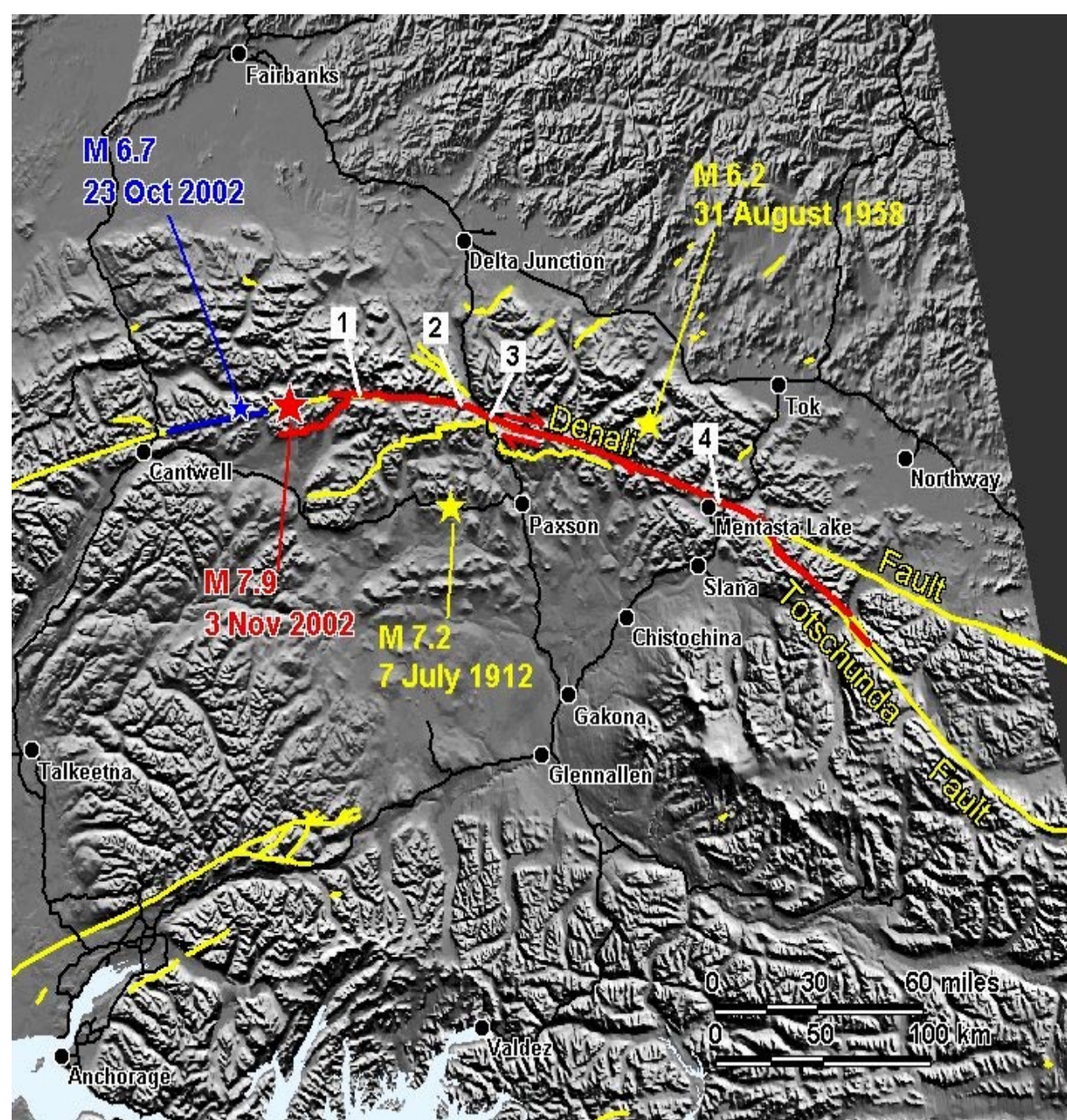


Info for all slides
taken from:

<http://www.dggs.dnr.state.ak.us>



Denali Fault Earthquake of November 3, 2002

A Real Test of the Trans-Alaska Pipeline



Locality 2 on Map. Mosaic view of rock avalanches across Black Rapids Glacier.

Photo by Dennis Trabant, USGS; mosaic by Rod March, USGS.

